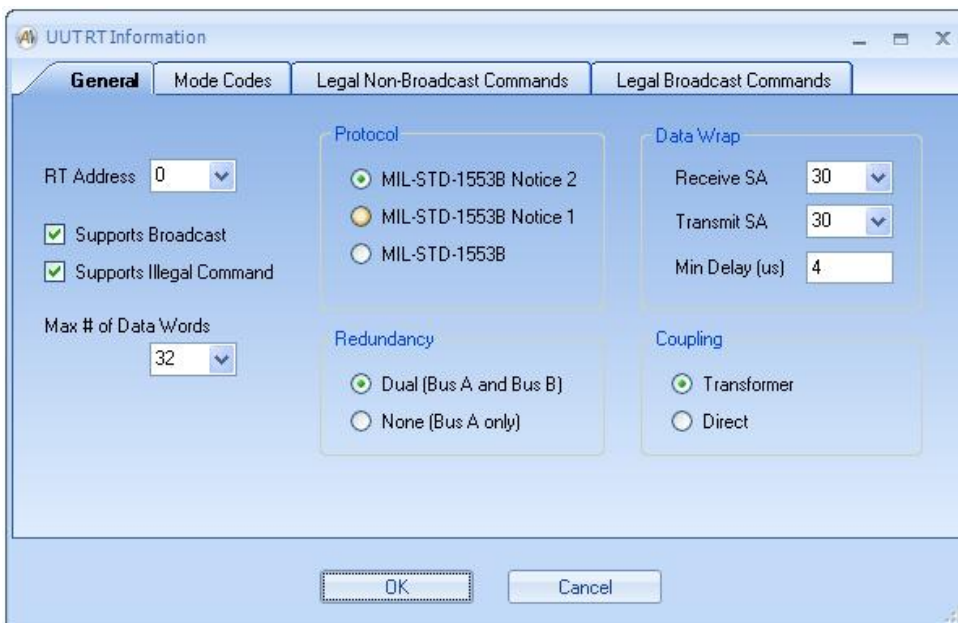
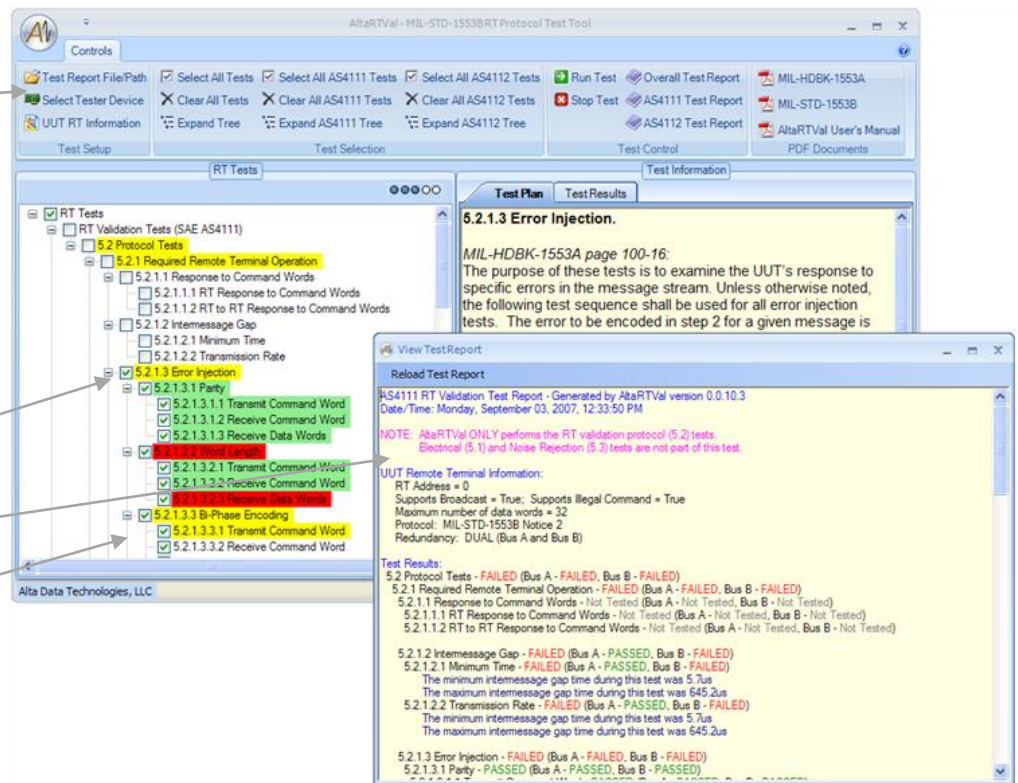


**AltaRTVal** provides the most advanced MIL-STD-1553 COTS validation tool in the industry. The software implements the protocol tests (5.2) for both the SAE AS4111 RT Validation Test Plan and the SAE AS4112 RT Production Test Plan to simplify design and production validation.

**Key Features**

- Intuitive Look-and-Feel for easy test setup and execution.
- Microsoft Office 2007 User Interface style
- The Latest Microsoft .NET Technology
- Easy Visual Pass/Fail Status
- Built-in Documentation
- Select Tests for Execution as Desired.



**Easy, Flexible Setup**

- Setup Per AS4111 and AS4112 or Tailor to the specific UUT Remote Terminal.
- Supports all Legal and Illegal Message Combinations (as do Alta Interface Cards)
- Program Prompts User as needed for Interactive steps (Setting/Clearing Status Word Bits, etc.)
- Test Both A and B Busses or Only One as Needed

AS4111 RT Validation Test Report - Generated by AltaRTVal version 0.0.10.3  
Date/Time: Monday, September 03, 2007, 1:45:45 PM

**NOTE:** AltaRTVal ONLY performs the RT validation protocol (5.2) tests.  
Electrical (5.1) and Noise Rejection (5.3) tests are not part of this test.

**UUT Remote Terminal Information:**

RT Address = 0  
Supports Broadcast = True; Supports Illegal Command = True  
Maximum number of data words = 32  
Protocol: MIL-STD-1553B Notice 2  
Redundancy: DUAL (Bus A and Bus B)

**Test Results:**

- 5.2 Protocol Tests - **FAILED** (Bus A - **FAILED**, Bus B - **FAILED**)
  - 5.2.1 Required Remote Terminal Operation - **FAILED** (Bus A - **FAILED**, Bus B - **FAILED**)
    - 5.2.1.1 Response to Command Words - Not Tested (Bus A - Not Tested, Bus B - Not Tested)
      - 5.2.1.1.1 RT Response to Command Words - Not Tested (Bus A - Not Tested, Bus B - Not Tested)
      - 5.2.1.1.2 RT to RT Response to Command Words - Not Tested (Bus A - Not Tested, Bus B - Not Tested)
    - 5.2.1.2 Intermessage Gap - Not Tested (Bus A - Not Tested, Bus B - Not Tested)
      - 5.2.1.2.1 Minimum Time - Not Tested (Bus A - Not Tested, Bus B - Not Tested)
      - 5.2.1.2.2 Transmission Rate - Not Tested (Bus A - Not Tested, Bus B - Not Tested)
    - 5.2.1.3 Error Injection - **FAILED** (Bus A - **FAILED**, Bus B - **FAILED**)
      - 5.2.1.3.1 Parity - **PASSED** (Bus A - **PASSED**, Bus B - **PASSED**)
        - 5.2.1.3.1.1 Transmit Command Word - **PASSED** (Bus A - **PASSED**, Bus B - **PASSED**)
        - 5.2.1.3.1.2 Recieve Command Word - **PASSED** (Bus A - **PASSED**, Bus B - **PASSED**)
        - 5.2.1.3.1.3 Receive Data Words - **PASSED** (Bus A - **PASSED**, Bus B - **PASSED**)
      - 5.2.1.3.2 Word Length - **FAILED** (Bus A - **FAILED**, Bus B - **FAILED**)
        - 5.2.1.3.2.1 Transmit Command Word - **PASSED** (Bus A - **PASSED**, Bus B - **PASSED**)
        - 5.2.1.3.2.2 Recieve Command Word - **PASSED** (Bus A - **PASSED**, Bus B - **PASSED**)
        - 5.2.1.3.2.3 Receive Data Words - **FAILED** (Bus A - **FAILED**, Bus B - **FAILED**)
      - 5.2.1.3.3 Bi-Phase Encoding - **FAILED** (Bus A - **FAILED**, Bus B - **FAILED**)
        - 5.2.1.3.3.1 Transmit Command Word - **PASSED** (Bus A - **PASSED**, Bus B - **PASSED**)
        - 5.2.1.3.3.2 Recieve Command Word - **PASSED** (Bus A - **PASSED**, Bus B - **PASSED**)
        - 5.2.1.3.3.3 Receive Data Words - **FAILED** (Bus A - **FAILED**, Bus B - **FAILED**)
      - 5.2.1.3.4 Sync Encoding - **FAILED** (Bus A - **FAILED**, Bus B - **FAILED**)
        - 5.2.1.3.4.1 Transmit Command Word - **PASSED** (Bus A - **PASSED**, Bus B - **PASSED**)
        - 5.2.1.3.4.2 Recieve Command Word - **PASSED** (Bus A - **PASSED**, Bus B - **PASSED**)

**Example 1553 Test Report**

- Comprehensive Report for Your Validation Records
- Full Date and Setup Information for Test Documentation.
- Records all PASS, FAIL, Aborted and Not Tested Results for Each Test.
- Ideal for Design Validation or Acceptance Test Receiving from Vendors
- Minimum Time Test is Limited to 4.6 to 5.5 usec Minimum Inter-Message Gap

**AltaRTVal RT Protocol Validation Tool  
System Requirements & Test Systems Inc. Note.**

- Works with Full Function, 2+ Channel 1553 Alta Cards
- Download Upgrades Via Alta Web Site – New Features are Added to Support Your Requirements as Needed
  - XML Setup Files Allow External Configuration
- Windows XP/2003/**Vista** – 1GByte/System RAM Recommended

Contact Alta to Download the User's Manual and the Demo Software.  
Click on [www.altadt.com](http://www.altadt.com) or call 505-994-3111 x1.

For complete validation testing, including electrical and noise rejection tests, we recommend **Test Systems, Inc.** ([www.testsystems.com](http://www.testsystems.com)).

AltaRTVal tests may vary verses Test Systems.

A system may pass AltaRTVal and fail Test Systems tests (or vice versa) – test implementations and interpretations can vary.

AltaRTVal is meant to prepare for, not guarantee, Test Systems results.

**Alta**dt  
data technologies

Alta Data Technologies LLC  
4075 Aloe Circle NE  
Rio Rancho, NM 87144 USA  
(In US): 888-429-1553  
(Outside US): 505-994-3111  
Fax: 805-504-8588

Cage Code: 4RK27 • NAICS: 334418  
[www.altadt.com](http://www.altadt.com) • [alta.sales@altadt.com](mailto:alta.sales@altadt.com)